

Visit us on the Internet  
[www.seminolecountyfl.gov](http://www.seminolecountyfl.gov)

**Online Features:**

- Request a new or replacement recycle bin.
- Lookup service level or days of waste service.
- Request a service option change.
- Access a Spanish and English version of this brochure in a PDF format.
- Este folleto se puede obtener en español o ingles en formato PDF.



**TWO LOCATIONS TO SERVE YOU**

**CENTRAL TRANSFER STATION / HOUSEHOLD HAZARDOUS WASTE COLLECTION CENTER**

1950 State Road 419, Longwood, FL 32750

Open 7:30 a.m. - 5:30 p.m., Monday - Saturday



**SEMINOLE COUNTY LANDFILL**

1930 East Osceola Road, Geneva, FL 32732

Open 7:30 a.m. - 5:30 p.m., 7 days a week



2010 **Solid Waste Management Programs**



- Access a Spanish and English version of this brochure in a PDF format at [www.seminolecountyfl.gov](http://www.seminolecountyfl.gov)
- Este folleto se puede obtener en español o ingles en formato PDF en [www.seminolecountyfl.gov](http://www.seminolecountyfl.gov)

**Special Waste Programs**



**Household Hazardous Waste**  
 Central Transfer Station

Household Hazardous Waste (HHW) items are not picked up at curbside and require special handling and disposal. Residents should bring these items to the HHW Collection Center, located at the Central Transfer Station. The center is open from 7:30 a.m. to 5:30 p.m., Monday - Saturday, excluding holidays, and accepts materials such as:

- Antifreeze
- Fluorescent Lamps
- Gasoline
- Rechargeable Batteries
- Paint
- Poisons
- Used Oil Filters
- Propane Tanks
- Pool & Lawn Chemicals
- Solvents
- Thermometers (Mercury)
- Thinners
- Used Motor Oil
- Thermostats
- Automotive Batteries
- Pesticides

All containers brought to the center must be in good condition and have **CLEARLY LABELED CONTENTS**. Disposal is free for all Seminole County residents. **Businesses may NOT participate in our HHW programs.** For more information on commercial hazardous waste disposal, please contact us at 407-665-2266.



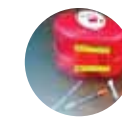
**Personal Information & Recycling Computers**

We strongly recommend that all information is removed from the hard drives of old computers before they are brought in for recycling. Methods of removing personal information from hard drives include: special software or removing the hard drive and drilling holes through the hard drive.



**Residential Electronics Recycling**  
 Central Transfer Station

E-scrap is the term used to describe end-of-life electronics. Computer components and televisions are specifically targeted for recycling because they contain high levels of lead. E-scrap is accepted from private households at the HHW Collection Center during normal operating hours at no charge. **Businesses may NOT bring electronics to the facility except during special collection events.** For more information call 407-665-2260.



**Sharps Program**

Seminole County offers a Sharps Program that provides a safe, easy and free method for residents to dispose of hypodermic needles and lancets. Residents can pick up a container, return it when full and get a new container at any of the following locations:

- **Central Transfer Station** • 1950 State Road 419 • Longwood
- **Seminole County Landfill** • 1930 East Osceola Road • Geneva
- **Environmental Services** • 500 West Lake Mary Blvd. • Sanford
- **Sanford Health Dept.** • 400 West Airport Blvd.
- **Casselberry Health Clinic** • 132 Sausalito Blvd.
- **All Seminole County and City Fire Stations**



**Tire Disposal**

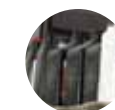
Seminole County does not accept tires curbside. **There are several options for tire disposal:**

1. When purchasing new tires, leave old tires at the store.
2. Bring old tires to the Central Transfer Station or to the Seminole County Landfill. The Central Transfer Station accepts no more than four tires per visit at \$1.00 per tire. At the Landfill, up to 10 tires are charged at \$1.00 per tire. More than 10 tires are weighed and charged at \$100.00 per ton.
3. Participate in a Tire Amnesty Day (for residential customers only). The Central Transfer Station and Landfill accept up to 10 passenger vehicle tires at no charge from customers on Tire Amnesty Days. Check the "Special Collection Days" section inside for upcoming events.



**Construction and Demolition Debris**

Construction and Demolition (C&D) debris is not collected at the curb or accepted at the Central Transfer Station, as it can be a safety concern to workers and may cause damage to collection and transfer vehicles. Debris is accepted at the landfill only. C&D delivered to the Seminole County Landfill is separated from waste going directly in the landfill. Common examples of C&D include: steel, glass, brick, doors, fencing, concrete, asphalt, roofing material, pipe, wallboard, lumber, large stumps, and tree branches from land clearing or tree removal.



**Used Oil Collection Center**  
 Seminole County Landfill

The **ONLY items** accepted at this facility are: used motor oil, used oil filters, automotive batteries, propane tanks. **Businesses may NOT participate in this program.**

# Curbside Collection Requirements



## Curbside Collection Service Options

Unincorporated Seminole County

The Solid Waste Management Program provides curbside collection and disposal services for the residential properties located in the unincorporated areas of Seminole County.

Property owners are offered a choice in collection services. The cost of collection and disposal services is collected annually via an assessment on the property tax bill. Each residential dwelling unit on a property is assessed as a billing unit. Assessment records are managed by the MSBU Program.

Service Option	Household Garbage (unlimited volume)	Recycle (unlimited volume)	Yard Waste (limited volume)	Proposed Assessment Tax Year 2010 (Service Year 2011)
	Collection Days per Week			
1	2	1	1	\$199
2	2	1	0	\$193
3	1	1	1	\$186
4	1	1	0	\$180

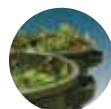
Option 1 is typically preferred by owners. Newly constructed homes are assigned Option 1. New owners of existing homes assume the prior owner's option. Option upgrades are processed throughout the service year with the pro-rated assessment increase being direct billed to the property owner. Service option changes that yield a reduced assessment are coordinated with the tax bill cycle and must be received by September 1 to be effective with the new service year.

Option change requests should be communicated to the MSBU Program by calling 407-665-7178 or by visiting the website at [www.seminolecountyfl.gov/fs/msbu](http://www.seminolecountyfl.gov/fs/msbu).



## Household Garbage

An unlimited amount of garbage may be placed out for collection in garbage cans not exceeding **50-gallons each** with lids and handles or **50-gallon bags**. Bags or containers can weigh no more than 50 pounds each.



## Yard Waste

Yard waste material such as tree branches, leaves, grass clippings, palm fronds, or other landscaping waste will be picked up each yard waste collection day, with a limit of 15 containers (any combination of bags, tied bundles or garbage cans not exceeding 50-gallons each.)

- Bundles cannot be longer than four feet or contain branches larger than four inches in diameter.
- Bundles, bags, or containers cannot weigh more than 50 pounds each.

## Important Hauling Information

The hauler will not collect containers exceeding the 50-gallon or 50-pound limit, bundles that exceed the 4-foot, 4-inch limit, bundles that are not tied, special wastes (as noted in this brochure) or yard waste mixed with household garbage. A tag explaining the reason(s) for non-pickup will be provided, so you can correct the issue before the next scheduled collection.

Wheel barrows, buckets, & recycle bins are not proper containers for collection!



## Special Collection Days

**Tire Amnesty Day - April 17, July 17 & October 16, 2010**  
Seminole County Residents qualify for free tire disposal of up to 10 tires from 8 a.m. - 2 p.m. at the Central Transfer Station and County Landfill.

**No Collection - Holiday - November 25, 2010**  
Please hold items until your next scheduled pickup day.

**Christmas Tree Collection - December 29, 2010**  
Place trees curbside for collection. Trees larger than 8 feet must be cut in half.



## On-Call Collection Services

On-call collection services include furniture, lawn equipment and push mowers (with fluids removed), furnaces and bicycles. Motorized vehicles and motors for vehicles are not collected.

On-call collection services also include material from minor household repairs and minor remodeling jobs in an amount equivalent to no more than three 50 gallon garbage cans weighing no more than 50 pounds each.



## Recycling

An unlimited amount of recycling may be placed for collection. The hauler will leave behind any materials not accepted in the program. Please place all recyclable items inside recycle bins. To order recycle bins, please call the Customer Service Helpline at 407-665-2260.

The following material is accepted in the curbside recycling program:

- Pasteboard (i.e., cereal boxes, empty paper towel and toilet paper rolls, soda boxes, beer boxes, tissue boxes, gift boxes, pizza boxes and shoe boxes)
- Brown paper grocery bags (no wax, no wet strength material, no liners)
- Corrugated cardboard (flattened and cut down to fit inside the recycle bin)
- Newspaper, supplements, magazines, catalogs and telephone books
- Plastic containers #1-7 (#'s on bottom of containers) **REMOVE ALL LIDS**
- Glass bottles and jars (clear, green and brown) **REMOVE ALL LIDS**
- Aluminum cans
- Steel cans such as food cans



Please empty and rinse containers before tossing in bin, you do not need to remove the labels. Non-hazardous aerosol cans which are empty and have had the nozzle removed are acceptable.

The following material is NOT accepted:

- Plastic bags, planting pots or plastic trays
- Electronic devices
- Motor oil or pesticide containers
- Drinkware
- Light bulbs
- Aluminum foil or pie plates
- Paint or pesticide cans
- Egg cartons and styrofoam trays
- Broken glass, i.e. window panes or mirrors, etc.
- Wax coated cardboard



# Important Contact Information

Assessment & Billing: 407-665-7178  
[www.seminolecountyfl.gov/fs/msbu/](http://www.seminolecountyfl.gov/fs/msbu/)

Residential E-Scrap: 407-665-2260  
[www.seminolecountyfl.gov/envsrvs/solidwaste/electronics.asp](http://www.seminolecountyfl.gov/envsrvs/solidwaste/electronics.asp)

Residential Household Hazardous Waste: 407-665-2260  
[www.seminolecountyfl.gov/envsrvs/solidwaste/hazardwaste.asp](http://www.seminolecountyfl.gov/envsrvs/solidwaste/hazardwaste.asp)

Hazardous Waste Programs for Businesses: 407-665-2266  
[www.seminolecountyfl.gov/envsrvs/solidwaste/busprograms.asp](http://www.seminolecountyfl.gov/envsrvs/solidwaste/busprograms.asp)

Garbage Collection: 407-665-2260  
[www.seminolecountyfl.gov/envsrvs/solidwaste/curbside.asp](http://www.seminolecountyfl.gov/envsrvs/solidwaste/curbside.asp)

Recycle Collection: 407-665-2260  
[www.seminolecountyfl.gov/envsrvs/solidwaste/recycling.asp](http://www.seminolecountyfl.gov/envsrvs/solidwaste/recycling.asp)

Yard Waste Collection: 407-665-2260  
[www.seminolecountyfl.gov/envsrvs/solidwaste/curbside.asp](http://www.seminolecountyfl.gov/envsrvs/solidwaste/curbside.asp)

On-Call Collection Services: 407-665-2260  
[www.seminolecountyfl.gov/envsrvs/solidwaste/curbside.asp](http://www.seminolecountyfl.gov/envsrvs/solidwaste/curbside.asp)

Option Change Requests: 407-665-7178  
[www.seminolecountyfl.gov/fs/msbu/](http://www.seminolecountyfl.gov/fs/msbu/)

Collection Schedule: 407-665-2260  
[www.seminolecountyfl.gov/fs/msbu/msbuswqnew.asp](http://www.seminolecountyfl.gov/fs/msbu/msbuswqnew.asp)

New Resident Information  
[www.seminolecountyfl.gov/fs/msbu/msbunewresident.asp](http://www.seminolecountyfl.gov/fs/msbu/msbunewresident.asp)

Online Recycle Bin Request  
[www.seminolecountyfl.gov/envsrvs/solidwaste/requestbin.asp](http://www.seminolecountyfl.gov/envsrvs/solidwaste/requestbin.asp)

Environmental Complaints: 407-665-2261

Report Illegal Dumping: 407-665-6650  
(Seminole County Sheriff's Office non-emergency)

Florida Fish and Wildlife Conservation Commission  
Human / Bear Interaction Information  
850-488-4676  
[www.myfwc.com/WILDLIFEHABITATS/Bear\\_interaction.htm](http://www.myfwc.com/WILDLIFEHABITATS/Bear_interaction.htm)

For information Call the  
Customer Service Helpline at:  
**(407) 665-2260**

*All materials need to be within six feet of the curbside by 6 a.m. on collection day.*